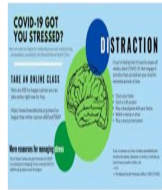


Disease Prevention Best Practices "the New Normal"

- Optimize telework
 - increases productivity in many cases
 - Less crowded work environment decreases disease spread
- Make and maintain a Hygiene Kit:
 - Disinfectant, hand sanitizer, mask, mask case/pouch
- Preventive Medicine Team evaluations
 - Physical walk-through to identify problems
 - Review with action team to address threats
 - Re-evaluation quarterly
- Make a home/barracks plan
 - Talk about the New Normal with family
 - Reassure children
 - Review emergency contacts/resources



DDERHS-HI ENR PUBLIC HEALTH SANITATION REPORT	Facility	Date	Page 1 of 3
Sanitation Report	19TH ESC and outlying	20200403	
12 OVERALL REMARKS (insert in additional line additional text)			
INSPECTION AREAS:			
423 - Verify DPH is maintaining HVAC filter change out schedule. If available and current system can support, request HEPA filters be installed.			
425 - Recommend positioning Corona/Lysol disinfecting wipes near high touch surfaces e.g. hand rails, printers, near common use pens (sign-in sheets), markers (dry erase boards) etc.			
427 - Recommend removing all porous material from administrative areas e.g. mouse pads, high touch fabric material, and any item that cannot be adequately cleaned/disinfected with wipes or spray.			

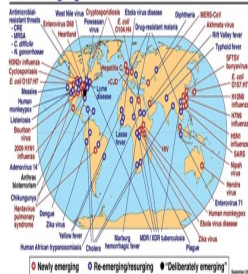
Maintain Hygiene

- Frequent handwashing and hand sanitizer
- Always cough or sneeze into an elbow/clothing
 - This includes while you are wearing a mask
 - If you do use your hand, immediately use hand sanitizer or wash hands
- Routine cleaning of frequently touched surfaces
 - Date/time on desks/tables etc.
 - Change clothes/disinfect when returning home
 - No footwear in the house

Avoid Close Contacts

- Avoid crowds whenever possible
- Social distancing (6 feet of separation) whenever possible; mask use when not possible
- Stay at least 3 feet apart when 6 feet not possible
- Wear a cloth face covering or mask when unable to do social distancing
 - Buses
 - Subways
 - Other crowded conditions
 - High-risk situations/facilities
 - Hospitals, nursing/care homes
 - Prisons
 - Work with refugees/displaced persons
 - First responders
- Staggered formations, two arm-lengths apart
- Double social distancing for jogging/running

Global Examples of Emerging and Re-Emerging Infectious Diseases



Agencies available to you

- ACS: (315) 757-2363 or 2372
- Behavioral Health (Bldg. 570): 737-5668
- Chaplain Office: 0503-357-3101/3100 or DSN 757-3101/3100
- On-Call Duty Chaplain - 010-9496-7445
- BDAACH COVID-19 Hotline (DSN: 737-2556 / Civ: 050-3337-2556)

Good Stories It's only a test

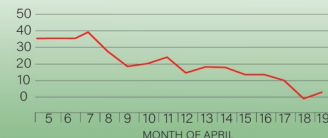
Almost everyone that passes through the Incheon JPPC tested and came back negative

COVID-19 FACT CHECK

#KILLtheVirus

OUT OF THE 58K USFK-AFFILIATED PERSONNEL,
LESS THAN .04% CONTRACTED COVID-19

- THE ROK IS ON A VERY POSITIVE DOWNWARD TREND
- LESS THAN 50 NEW CASES PER DAY IN THE LAST 12 CONSECUTIVE DAYS



IT ONLY TAKES ONE

- 116 CASES IN KOREA (INCLUDING 1 USFK CASE) WERE LINKED TO A SINGLE FITNESS CLASS

STAY VIGILANT!
#SQUASHtheCurve



INCHEON JPPC

25th Movement Control BN
Material Support Command –Korea
19th Expeditionary Sustainment Command
Eight Army
United States Forces Korea

PUBLIC HEALTH EMERGENCY EXTENSION
PHE EXTENDED TO SATURDAY MAY 23, 2020

WHAT'S GOING ON?

COVID-19 THREAT IS ON A VERY POSITIVE DOWNWARD TREND WITHIN THE ROK

COVID COMING FROM OVERSEAS POSES THE GREATEST RISK TO OUR PROTECTIVE BUBBLES: IT ONLY TAKES ONE CASE TO POP IT

ALL USFK PERSONNEL ARRIVING FROM OFF-PENINSULA MUST COMPLETE A 14 DAY QUARANTINE AND 2 COVID TESTS

WHY EXTEND PHE?

PHE PROVIDES THE USFK COMMANDER AUTHORITY TO ENFORCE INSTALLATION ACCESS POLICIES

REGIONAL AND LOCAL COVID CONDITIONS WILL INFORM THE CONTINUATION OR IMPLEMENTATION OF ADDITIONAL HPCON RESTRICTIONS

CONTINUE TO STAY VIGILANT!
PROTECT THE FORCE TO PROTECT THE MISSION

#KILLtheVirus #SquashTheCurve

Message from the USFK CDR



HEADQUARTERS, UNITED STATES FORCES KOREA
UNIT #15237
APO AP 96271-6237

FKCC

24 April 2020

MEMORANDUM FOR ALL U.S. COMMANDS AND UNITS IN THE REPUBLIC OF KOREA

SUBJECT: Renewal of 25 March 2020 Public Health Emergency Declaration on USFK Installations

1. Basis and Declaration. Our #1 priority remains the protection of the force. We have made significant progress in our containment efforts of COVID-19. One key to our success has been compliance with our Public Health Guidance. However, now is not the time to relax our guard against this insidious disease; rather, disciplined and deliberate continued action is necessary to ensure the health of our force. After deliberate command and staff assessment and receiving the Public Health Emergency Officer's recommendation, I am renewing my Public Health Emergency (PHE) declaration of 25 March 2020.

2. Authority: DoD Instruction (DoDI) 6200.03, "Public Health Emergency Management Within the DoD."

3. Applicability: All USFK military commands, installations, family members, DoD and KN civilian employees, DoD retirees, contractors, and any other persons with access to USFK installations in ROK.

4. Duration: This declaration will automatically terminate 30 days from the date of this memo, unless it is renewed and re-published, or terminated sooner by me.

5. Coordinating Instructions:

a. USFK public health personnel are hereby directed to identify, confirm, and control this public health emergency through all necessary means outlined in DoDI 6200.03. USFK will follow DoD's Health Protection Condition framework to identify actions necessary for implementation.

b. Commanders may issue guidance that affects installation property and personnel, to include visitors, residents, and those working on the installation – e.g., implement steps to protect personnel health, close base facilities, restrict movement, or implement quarantine for select individuals.

c. Commanders will coordinate activities and share information with relevant civil authorities to ensure our response is appropriate for the PHE. Information may include personally identifiable health information only to the extent necessary to protect public health and safety.

d. Commanders shall familiarize themselves and subordinate uniformed personnel with Article 84 of the Uniform Code of Military Justice (UCMJ). All individuals listed in Paragraph 3, desiring to gain and maintain access to USFK installations, must follow the same Public Health Guidance and HPCON directives as our Service Members. Incidents of noncompliance shall be reported to this headquarters for a determination on whether to bar the individuals from USFK installations for a period of two years.

ROBERT B. ABRAMS
General, U.S. Army
Commanding

Do and Don'ts while at the Airport

Restrictions

- 1) Keep your gloves and mask on at all times.
- 2) Stay within the designated area.
- 3) Restaurants and vendors are strictly prohibited.
- 4) Notify USFK personnel to use the restroom.
- 5) Only Authorized mode of transportation is coordinated through this desk.

Failure to comply may result in:

- Military: UCMJ
- DoD Dependents: Revocation of command sponsorship, mandatory early return of dependents (EROD) and/or, bar from USFK installations for no less than 24 months.
- Contractors, GS, and other DoD affiliated personnel: Bar from USFK Installations for no less than 24 months.

CONSEQUENCES OF NONCOMPLIANCE
WITH THE USFK COMMANDER'S FORCE HEALTH PROTECTION MEASURES

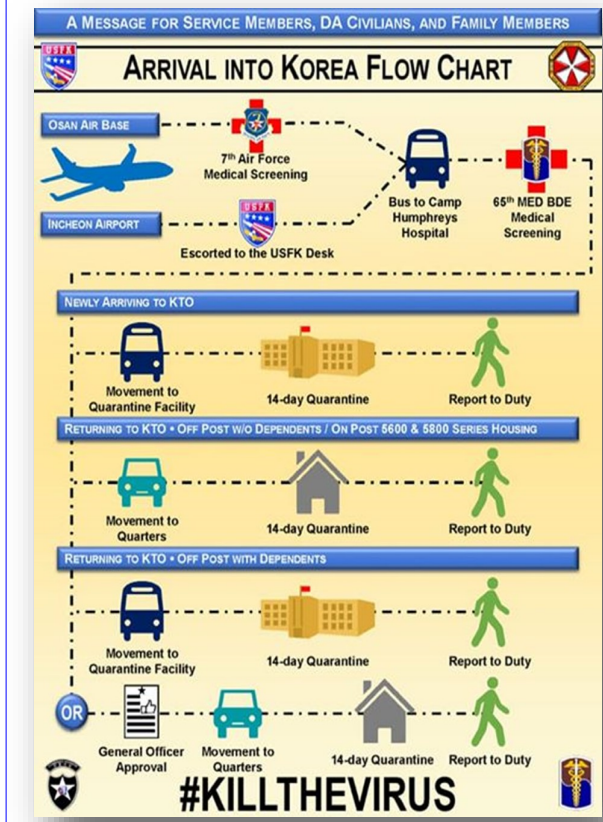
A DEPARTMENT OF DEFENSE EDUCATION ACTIVITY (DoDEA) EMPLOYEE WHO WORKS ON CAMP HUMPHREYS AND SPOUSE TRAVELLED TO AND DINED-IN AT AN OFF-INSTALLATION RESTAURANT ON APRIL 5.

DINING-IN AT ANY OFF-INSTALLATION RESTAURANT IS A VIOLATION OF USFK'S PUBLIC HEALTH GUIDANCE AND HEALTH PROTECTION CONDITION MEASURES.

THESE MITIGATION MEASURES ARE BY ORDER OF USFK COMMANDER DURING THE PHE AND MUST BE OBEYED BY EVERYONE SEEKING ACCESS TO USFK INSTALLATIONS.

BARRED FROM ALL USFK INSTALLATIONS FOR TWO YEARS EFFECTIVE APRIL 21, 2020

Airport Departures Procedures



COVID 19 in South Korea

- ◆ Remains in Health Protection Condition Charlie
- ◆ Over 100,000 confirmed cases
- ◆ Under 300 deaths
- ◆ Over 9,400 recovered patients
- ◆ Rapid and extensive tests
- ◆ Considered one of the largest and best-organized epidemic control programs in the world
- ◆ First US Soldier diagnosed with COVID 19 fully recovered

HPCON Level Chart

As of: 17 1700 APR 20 **Health Protection Condition - Charlie (HPCON-C)** For more information visit www.usfk.mil or your installation's Facebook/Twitter page

Authorized Activities with HPCON Core Tenet Mitigations

On Post	FX Shopette	Commissary	Medical	Pharmacy	Post Office	Law Enforcement	On-post Bus/Taxi	Delivery	Take-outs	Bank	Gas Station	Visiting Family & Friends	Walk/Run/Bike near Home	Vet	Fire Dept	DFAC
Off Post	Big Box Stores	Medical	Pharmacy	Post Office	Law Enforcement	Public Transportation	Delivery	Take-outs	Bank	Gas Station	Visiting Family & Friends	Walk/Run/Bike near Home	Vet	Fire Dept		

Reopened in HPCON-C

On Post	Auto Repair	Laundry Dry Cleaner	School	Other Amenities	Sports Youth Activity
Off Post	Auto Repair	Laundry Dry Cleaner	School	Government Office	

Reopened in HPCON-C but limited

On Post	Gym	Religious Service	Barber / Salon	Child Care / Baby Sitter	Theaters
Off Post	Gym	Religious Service	Barber / Salon	Child Care / Baby Sitter	

"It only takes one! Remain vigilant!"
An increase in COVID-19 Positive test within USFK Community will result in increase HPCON condition back to HPCON Charlie Plus

The activities below pose an unnecessary risk to health and should never be conducted off USFK installations during HPCON C or higher

- Clubs
- Shopping Centers / Plaza
- Bars
- Amusement Parks
- Festivals
- Theaters
- Dine-In Restaurants